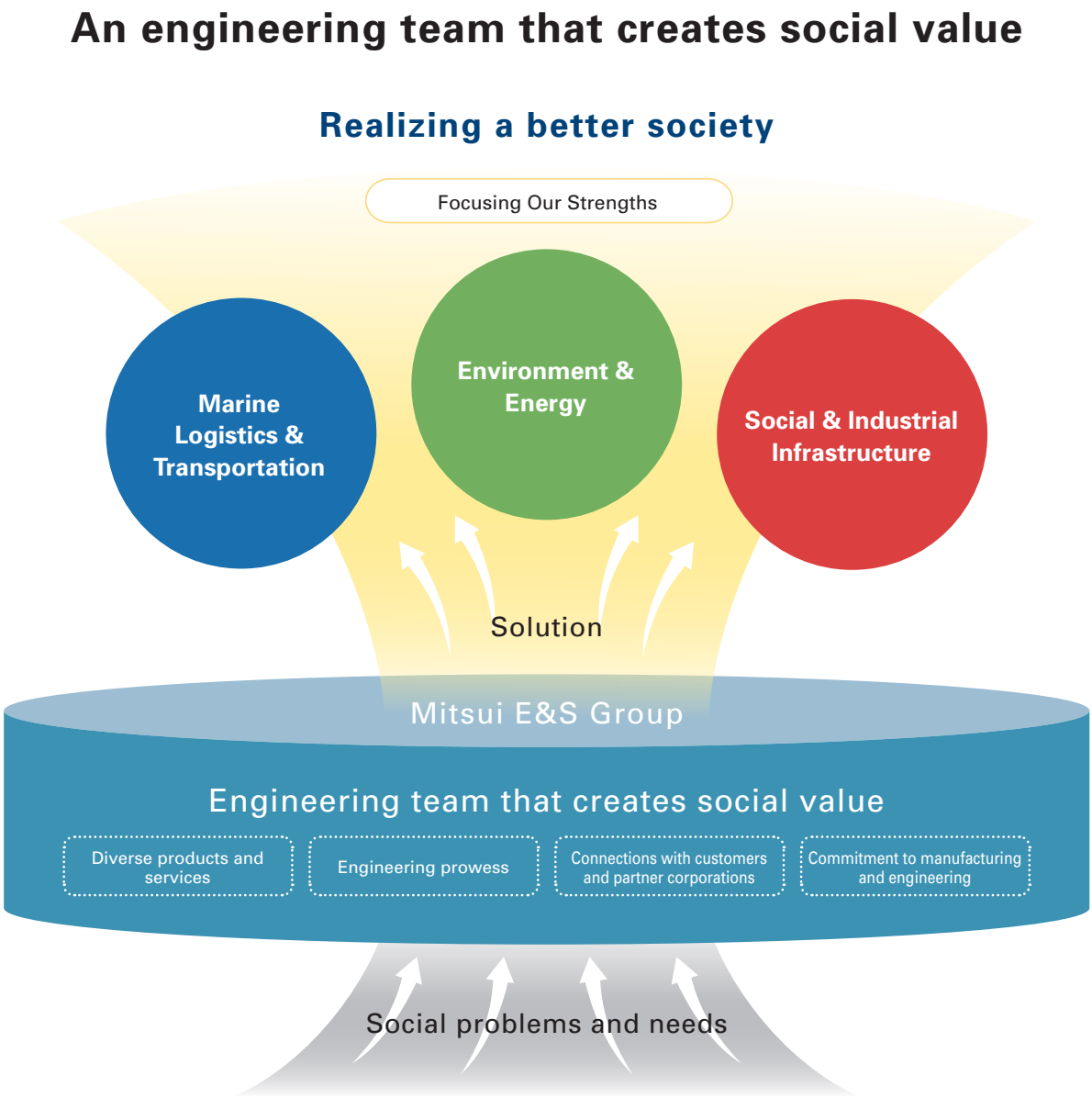


Long term strategy “Mitsui E&S Group 2025 Vision”

We are an engineering team that creates social value to realize a better society.

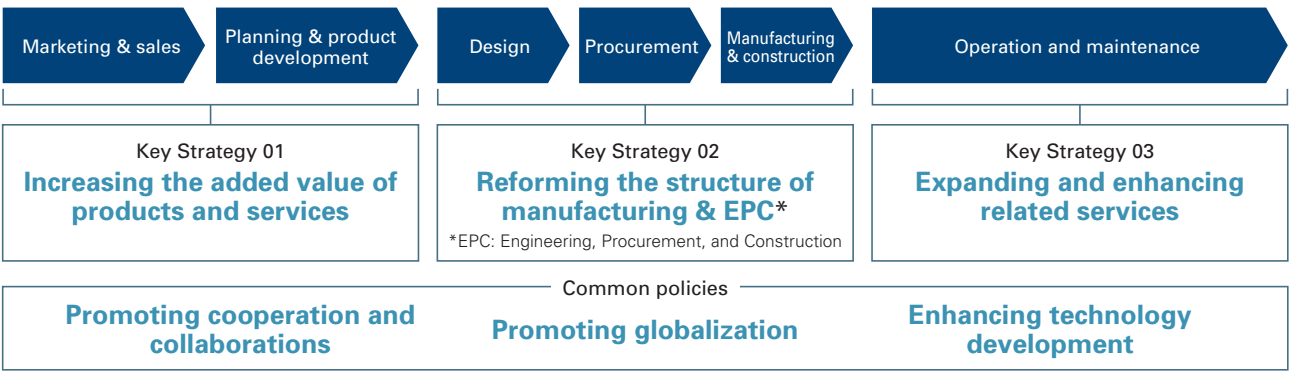
The Mitsui E&S Group 2025 Vision outlines the Mitsui E&S Group’s long-term direction for the period between FY2017 (’16/4 - ’17/3) and FY2026 (’25/4 - ’26/3). To achieve the Mitsui E&S Group company philosophy of “To continue working as a company trusted by society and individuals through our products and services,” we outlined the direction of our future initiatives based on an evaluation of our rapidly changing external environment.

Ideal Situation of the Mitsui E&S Group



Key Strategy and Common Policies

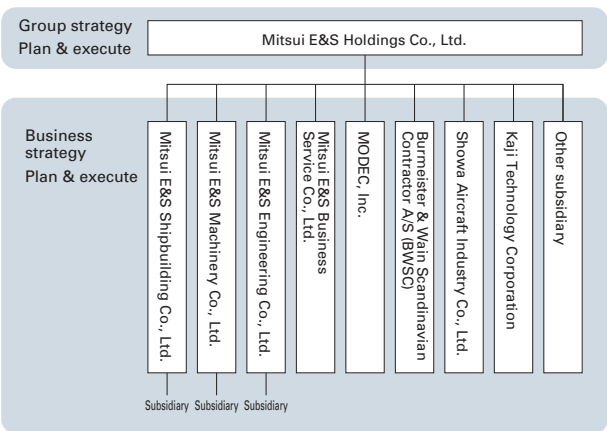
To achieve our Ideal Situation, we established a Key Strategy that divides our administrative workflow into three stages.



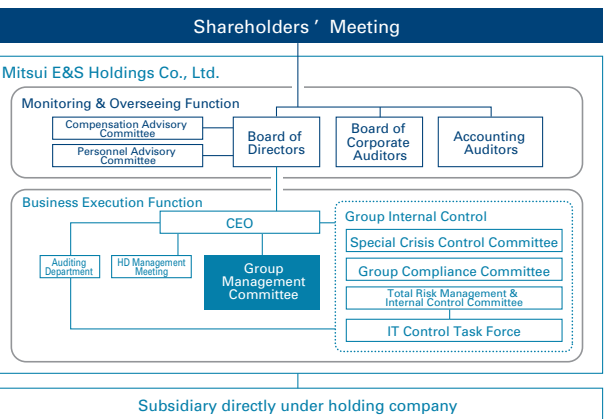
Reinforced business foundation

Shifting to a holding company system

Separated group management and business management with the clear definition of each organization, function, and authority



Established the “Group Management Committee” to discuss and make decisions on the policy of group-wide management strategy



Roadmap from MBP17 to 2025Vision

